

DIRECTIONS TO THE FARM HOUSE

FROM NEWARK AIRPORT AND EAST

Route 78 WEST to 517 NORTH (Oldwick Exit 24). Stay on Route 517 approximately 20 minutes. At traffic light in Long Valley, go straight across toward Schooley's Mountain. Proceed for approximately 6 miles. Heath Village is on the other side of the mountain on the right.

FROM NEW YORK CITY AND EAST

Route 80 WEST to Route 46 (Exit 26 Hackettstown/Budd Lake). Follow Route 46 into Hackettstown (approximately 9 miles). At traffic light (T intersection), turn left onto Route 182 (also known as Mountain Avenue and eventually becomes Schooley's Mountain Road) and continue for about 2 miles. The Farm House will be on your left, just past Hastings Square.

FROM PENNSYLVANIA (AND WEST)

Route 80 East to Route 517 SOUTH (Exit 19 Hackettstown) to Hackettstown (approximately 5 miles). At traffic light (Main Street/Route 46 East) turn left. Continue through town and at 5 point intersection bear right onto Route 182/Mountain Avenue (eventually becomes Schooley's Mountain Road). The Farm House will be on your left just past Hastings Square.

Nearby Attractions Include:

- ◆ Waterloo Village
- ◆ Schooley's Mountain Park
 - ◆ Historic Hope
- ◆ Chester Antique Shops
- ◆ Minebrook Golf Course
- ◆ Delaware Water Gap
 - ◆ National Park
- ◆ U.S. Equestrian Team Training Center
- ◆ Jockey Hollow Historical Park
- ◆ U.S. Golf Assoc. Museum

***For rates and reservations call:
Heath Village Retirement Community***

908-852-4801

The Farm House

At Heath Village Retirement Community



***Guest Accommodations
in the Finest Tradition***

444 Schooley's Mountain Road

Hackettstown, NJ 07840

908-852-4801

www.heathvillage.com

A complimentary Continental breakfast awaits you each morning in our charming country kitchen.

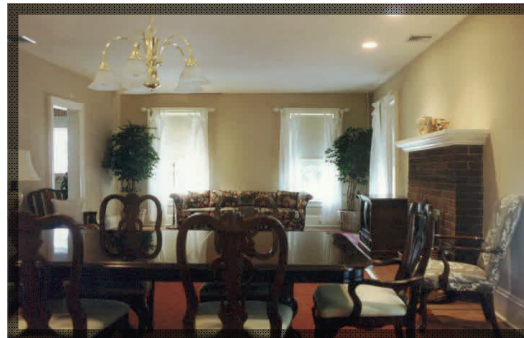


After a good night's rest you are welcome to use the amenities at Heath Village, located within walking distance.

The Farm House features three bedrooms and two full bathrooms, one on each floor.



Relax each evening in the comfortable sitting room where you can catch up on the news or just curl up with a good book.



The formal dining room is available for you to enjoy special gatherings or celebrations with family and friends.

- ◆ *Heated swimming pool complex*
- ◆ *Three-hole pitch & putt golf course*
 - ◆ *Outdoor shuffle board court*
 - ◆ *Croquet & Bocce courts*
- ◆ *1.2 miles of scenic walking/hiking trails*